



Delta Lloyd Regatta 2017

The Delta Lloyd Regatta is a Sailing World Cup 2018 qualification regatta

SAILING INSTRUCTIONS

**Organising Authority: the Royal Netherlands Watersports Association (RNWA),
the Royal Yacht Club Hollandia and PRISM Amsterdam.**

[DP] denotes a rule for which the penalty is at the discretion of the International Jury.

[NP] denotes that a breach of this rule will not be grounds for a protest by a boat.

[SP] denotes a rule for which a standard penalty may be applied by the race committee without a hearing"

1. RULES

- 1.1 The regatta will be governed by the rules as defined in 'The Racing Rules of Sailing' (RRS).
- 1.2 No National Authority prescriptions apply.
- 1.3 Decisions of the International Jury will be final as provided in RRS 70.5.
- 1.4 If there is a conflict between languages the English text will take precedence.
- 1.5 Appendix B, Windsurfing Competition Rules, will apply.
- 1.6 Appendix P, Special Procedures for Rule 42, will apply.
- 1.7 For the Men's and Open Skiff, RRS 44.1 and RRS P2.1 are changed so that the Two-Turns Penalty is replaced by the One-Turn Penalty.
- 1.8 For Finals and Medal Race stages, World Sailing Addendum Q, *Umpired Fleet Racing*, will apply and take precedence over any conflicting instructions.
- 1.9 For the 2.4mR event, the 2.4 Norlin OD class rules will apply.



2. [DP] [NP] SAFETY REGULATIONS

- 2.1 The race committee will protest a boat for a breach of these safety regulations.
- 2.2 Competitors shall wear personal flotation devices at all times while afloat, except briefly while changing or adjusting clothing or personal equipment. Board men and women competitors shall wear personal flotation devices when Flag Y is displayed. This changes the preamble to part 4.
- 2.3 Boats not leaving the harbour for a scheduled race shall promptly notify the Race Office.
- 2.4 A boat that retires from racing shall notify the race committee before leaving the racing area, or if that is not possible, shall notify the race office as soon as possible after returning ashore.
- 2.5 Boats retiring from racing in accordance with SI 2.4 shall complete a retirement declaration form at the race office before the protest time limit.
- 2.6 In accordance with NoR 16, Berthing, boats shall return to and remain in their assigned berths.
- 2.7 Boats shall not sail into other course areas whilst the other course areas are racing. Boats not racing shall remain clear of boats that are racing and official boats.
- 2.8 When the race committee displays flag V with repetitive sounds, all support boats shall monitor VHF channel 88 for search and rescue instructions.

3. [DP] CODE OF CONDUCT

Competitors shall comply with any reasonable request from a regatta official.

4. COMMUNICATIONS WITH COMPETITORS

- 4.1 Notices to competitors will be posted on the official notice board(s) located near the race office. Notices will also be posted on the website at www.deltalloydregatta.org. Failure to post a notice at the website will not be grounds for redress. This changes RRS 62.1(a)
- 4.2 When a visual signal is displayed over an area, event or fleet flag, the signal applies only to that area, event or fleet. This changes the Race Signals preamble.
- 4.3 Signals ashore for all One and Two Person Dinghy and 2.4mR events will be displayed from the main flagpole at the Regatta Center Medemblik. The signals ashore for the Skiff's and Boards will be displayed from the flagpole at their launching area.
- 4.4 When flag AP is displayed ashore, '1 minute' is replaced with: 'not less than 30 minutes' for Skiff, Boards and for all Medal Race Stage events; and with 'not less than 60 minutes' for all other events. This changes race signal AP.
- 4.5 [DP] Flag AP over H displayed ashore means 'Boats shall not leave the harbour. Wait for further instructions.' This changes race Signal AP over H.



5. CHANGES TO SAILING INSTRUCTIONS

- 5.1 Any change to the format or schedule of races will be posted by 2100 on the day before it will take effect and any change to the Sailing Instructions will be posted before 0900 on the day it will take effect.
- 5.2 Any reassignment of events or fleets to course areas will be posted before 0900 on the day it will take effect, or if flag AP is displayed ashore, at least 30 minutes before flag AP for that class or fleet is removed.
- 5.3 When any SI addendum is changed, an updated version of it will be posted on the Official Notice Board as part of these sailing instructions.

6. FORMAT OF RACING

- 6.1 The format for 2.4mR event consists of a single series without a medal race.
The format for RS:X M is described in Addendum E. The other Olympic events will use the format described in this SI 6.
- 6.2 The format for each Olympic event consists of an opening series and a Medal Race. If the event is split into fleets, the opening series will be divided into a Qualifying series and a Final series.
The number of fleets for an event is shown in SI Addendum D and may be changed until 2100 on the day before the first scheduled race.
- 6.3 *Qualifying Series*
 - 6.3.1 Boats will be assigned to Yellow, Blue or Red as nearly as possible, equal size and ability. Initial assignments will be made by a seeding committee appointed by the race committee. Those assignments will be posted by 2100 on the day before the first scheduled race for each event.
 - 6.3.2 Boats will be reassigned to fleets after each day of racing, except if on the first day fewer than two races are completed by all fleets. If all fleets have completed the same number of races, boats will be reassigned on the basis of their ranks in the series. If all fleets have not completed the same number of races, the series scores for reassignment will be calculated for those races, numbered in order of completion, completed by all fleets. Reassignments will be made as follows;

<i>Rank in series</i>	<i>Fleet assignment</i>
-----------------------	-------------------------

First	Yellow
Second	Blue
Third	Red
Fourth	Red
Fifth	Blue
Sixth	Yellow
Seventh	Yellow
Eighth	Blue
and so on	

If two or more boats have the same rank, they will be entered in the left column in order of fleets in SI 6.3.1

6.3.3 Assignments will be based on the ranking available at 2100 that day regardless of protests or requests for redress not yet decided.



6.3.4 If all fleets have not completed the same number of races by the end of a day, the fleets with fewer races will continue racing the following day until all fleets have completed the same number of races. All boats will thereafter race in the new fleets.

6.4 *Final Series*

6.4.1 A final series will be scheduled for each class with 4 or more Qualifying series completed.

6.4.2 Boats will be assigned to Gold, Silver or Bronze fleets on the basis of their ranks in the qualifying series. The Gold series fleets will have the number of boats shown in Addendum D. Boats with the best qualifying-series ranks will race all final-series races in the Gold fleet. Boats with the next-best qualifying-series ranks will race in the Silver fleet, etc.

6.4.3 Any recalculation of Final Series ranking after boats have been assigned to the Final Series will not affect the assignments except that a redress decision may promote a boat to a higher fleet.

6.5 *Medal Race Stage*

6.5.1 A Medal Race Stage will be scheduled for each Olympic class with three or more Opening Series races completed. The Medal Race Stage will be one race (Three races for 49er and FX in Theater Racing Course as shown in addendum C).

6.5.2 For events with a Medal Race Stage the ten boats ranked highest in the opening series will be assigned to compete in the Medal Race.

6.5.3 Assignments to the Medal Stage scheduled on Friday May 26 will be based on the final ranking available as soon as possible after the end of protest time of that day. Assignments to the Medal Race Stage scheduled on Saturday May 27 will be based on the ranking available at 0800 on the day of the Medal Race Stage. The protest committee may extend the time limit.

7. SCHEDULE OF RACES

7.1 The total number of races scheduled is shown in SI Addendum D.

7.2 The daily race schedule and the scheduled time of the warning signal for the first race are shown in SI Addendum C.

7.3 Races will not be sailed ahead of schedule or as a means of catching up races not completed on previous days except, and at the discretion of the Race Committee:

7.3.1 to ensure that the minimum number of races are completed to constitute a regatta

7.3.2 in order to make the number of races equal for both groups racing in a Qualifying Series

7.3.3 in order to complete the minimum number of races required in order to schedule a Medal Race

7.4 The Opening Series and Medal Race, if any, will take place as detailed in SI Addendum C. For boats not qualified for the Medal Race, the Opening Series will be extended with one more race on Saturday May 27.

7.5 For all Olympic classes the opening series will be extended if three races have not been completed by Friday May 26th and the Medal Race Stage series will be cancelled. (Except for RS:X, see Appendix E) For split fleet events, the qualifying series will be extended if less than three races have been completed.



- 7.6 The warning signal for each succeeding race on any day will be made as soon as practicable.
- 7.7 To alert boats that a race or sequence of races will begin soon, the orange starting line flag on the committee boat will be displayed with one sound for at least five minutes before a warning signal is made.
- 7.8 There will be no warning signal for any class after 1630 on Saturday May 27th.

8. COURSE AREAS

- 8.1 The course areas are shown in SI Addendum A.
- 8.2 Events are assigned to course areas as stated in SI Addendum C.
- 8.3 For the Medal Race Stage, one race area will be used.

9. THE COURSES

- 9.1 The diagrams in SI Addendum B show the courses, the course designations, the approximate angles between legs, the order in which marks are to be passed, and the side on which each mark is to be left.
- 9.2 The course designation for the Men and Women Board class and Medal Races Stage for all classes will be displayed on the committee boat at or before the warning signal.

10. MARKS

- 10.1 Marks 1, 2, 3, and 4, or associated gate marks, will be as follows:

Course Area	Marks
Red	Red Cylindrical The Slalom Marks will be Orange Conical Replacement mark will be white Cylindrical
Yellow	Yellow Cylindrical
Orange	Orange Conical
Blue	Blue Conical
Medal Races Stage	Green Cylindrical The Slalom Marks will be Blue Conical



11. CLASS FLAGS

Class flags will be class insignia on the following background:

Event	Class Insignia	Background Colour
Men's Board	RS:X	White
Men's One Person Dinghy	Laser Standard	White
Women's One Person Dinghy	Laser Radial	Light Blue
Men's Skiff	49er	White
Open Skiff	49erFX	Light Blue
Men's and Women Two Person Dinghy	470	White
One Person Para World Sailing	2.4mR	White

If split-fleets are used the group colour, if applicable, will be displayed with the Class Flag

12. THE START

- 12.1 The starting line will be between a staff displaying an orange flag on the race committee vessel at the starboard end and a staff displaying an orange flag on the race committee vessel at the port end.
- 12.2 [DP] A buoy may be attached to the race committee starting boat anchor line just below keel depth. Boats shall not pass between this buoy and the race committee starting boat at any time. This buoy is part of the race committee starting boat ground tackle.
- 12.3 [DP] When a starting sequence is in progress, boats whose warning signal has not been made shall avoid the starting area. The starting area is defined as a rectangle 50 meters from the starting line and marks in all directions.

13. COURSE CHANGES

- 13.1 To change the next leg of the course for all classes except the RS:X class, the race committee will move the original mark, gate or finishing line to a new position. For the RS:X class, the same applies to marks 4, S1, S2, S3 and the finish line. For mark 1, the race committee will lay a replacement mark and remove the original mark as soon as is practicable. In a subsequent change to mark 1, the new mark will be replaced by the original mark.
- 13.2 Courses will not be shortened. This changes RRS 32.



14. THE FINISH

The finishing line will be between a staff displaying an orange flag on the race committee vessel and either:

- (a) a nearby spar buoy with an orange flag, or
- (b) a staff displaying an orange flag on a second race committee vessel.

15. TIME LIMITS AND TARGET TIMES

15.1 Except for Medal Race Stage, time limits and target times are as follows:

Class	Time Limit	Mark 1 Time Limit	Finish Window	Target Time
470, Laser, Laser Radial	75	25	15	50
49er, 49erFX	50	20	10	35
RS: X	40	15	15	20-25
2.4mR	90	30	20	50

15.2 Time limits and target times for Medal Race Stages are as follows:

Class	Time Limit	Mark 1 Time Limit	Finish Window	Target Time
49er	20	5	5	10
RS: X Quarter Final	25	none	5	15-18
RS: X Semi Final Race and Repechage Race	20	none	5	10-12
RS: X Grand Final Race	15	none	5	6-8
All other classes	40	10	10	20

15.3 If no boat has passed Mark 1 within the Mark 1 Time Limit the race shall be abandoned.

15.4 Boats failing to finish within the time stated in the Finish Window after the first boat sails the course and finishes will be scored Did Not Finish. This changes RRS 35, A4 and A5.



16. [DP] EQUIPMENT AND MEASUREMENT CHECKS

- 16.1 Equipment may be inspected at any time for compliance with the Class Rules and Sailing Instructions. When instructed by an Event Equipment Inspector, a boat shall proceed immediately to a designated area for inspection.
- 16.2 For Olympic Events, boats shall apply Equipment Limitation Control stickers to specified equipment and sign a declaration of compliance prior to racing.

17. [DP] REPLACEMENT OF CREW OR EQUIPMENT

- 17.1 Substitution of competitors will not be allowed without prior written approval of the race committee and shall comply with any restrictions in the Notice of Race.
- 17.2 Substitution of damaged or lost equipment will not be allowed unless approved by the race committee. Requests for substitution shall be made to the race committee at the first reasonable opportunity.

18. OFFICIAL BOATS

- 18.1 Official boats will be marked as follows:

Equipment Inspection	Flags with 'Measurer'
First aid/Medical	Flag with 'Rescue'
Jury/Judges	Flags with 'Jury'
Media	Flags with 'PRESS'
Race Committee	Event Flag
Rescue or Course Marshalls	Flag with 'Rescue'

- 18.2 Actions by official boats, helicopters, drones or zeppelin shall not be grounds for redress. This changes RRS 60.1(b).

19. [DP] SUPPORT AND SPECTATOR BOATS

- 19.1 Addendum G – Coach boats regulations shall apply to all support boats.
- 19.2 Addendum G – Coach boats regulations parts 4 and 5 shall also apply to spectator boats.

20. [DP] [NP] IDENTIFICATION AND ADVERTISING WHILE RACING

- 20.1 Each day, the first, second and third boats in series ranking at the beginning of the day require a coloured dot to be applied to the mainsail. The Organising Authority will supply coloured dots. Instructions for their use are in Addendum F.
- 20.2 Only for Laser and Laser Radial, Boats shall display bow numbers. The organizing authority will supply the numbers (replacement will be charged for). Instructions for their use are in Addendum F.
- 20.3 Boats shall display required event sponsor advertising. The Organising Authority will supply the advertising. Instructions for their use are in Addendum F.



20.4 For split fleet events, every boat shall display a coloured band or ribbon corresponding to the fleet to which she has been assigned. The Organising Authority will supply the bands or ribbons. Instructions for their use are in Addendum F.

21. SCORING (RS:X class has modifications to this SI, described in Addendum E)

21.1 The Low Point System shall apply to all races. RRS A4.1 is changed so that the points scored in Medal Race are doubled (except 49er and 49erFX remain single points).

21.2 A boat's score shall be calculated in accordance with RRS A2, except that one score will be excluded after 5 races have been completed. The Medal Race Stage score shall not be excluded.

21.3 A boat starting later than 4 minutes after her starting signal will be scored Did Not Start. This changes RRS A4 and A5.

21.4 RRS A4.2 is changed so that those scores are based on,

- (a) the number of boats assigned to compete in a Single Fleet series, or
- (b) the number of boats assigned to the largest fleet in a split fleet Qualification Series, or
- (c) the number of boats assigned to a fleet in the Final Series or Medal Race
- (d) the number of boats of the Gold Fleet not assigned to the Medal Race and scheduled to an additional race on the last day

For those competitors not assigned to the Medal Race and scheduled to an additional race on the last day, the first finisher will score 1 point, 2nd 2 points and so on.

21.5 Three race is required to be completed to constitute a regatta.

21.6 If at the end of the Qualifying Series some boats have more races completed than others, scores for the most recent races will be excluded so that all boats have the same number of racescores.

21.7 The boats competing in the Medal Race shall be scored highest in the regatta. The boats competing in the Gold Fleet shall be scored higher in the regatta than boats competing in the Silver Fleet. The boats competing in the Silver Fleet shall be scored higher in the regatta than boats competing in the Bronze Fleet. This may not apply to a boat disqualified under RRS 5 or 69.

21.8 RRS B8 is deleted. RRS A8 is changed as follows;

21.8.1 for boats competing in the Medal Race, ties in the regatta score are broken by the Medal Race score. (except for 49er and 49er FX ties in the regatta score are broken by applying RRS A8.2 to the opening series scores).

21.8.2 Ties in a split fleet opening series are broken in accordance with RRS A8.2. Ties in a split fleet qualifying series or a single fleet opening series shall be broken in accordance with RRS A8.

21.9 A boat assigned to compete in the Medal Race shall make a genuine effort to start, sail the course and finish. The penalty for a breach of this instruction will be ranking the boat in tenth in the regatta. If there are two such boats, they will be ranked ninth and tenth, in order of their Opening Series ranks and so on. This changes RRS A2.

21.10 To request correction of an alleged error in posted race or series results, a boat may complete a scoring enquiry form available from the race office.



22. PROTESTS, PENALTIES AND REQUESTS FOR REDRESS

- 22.1 Protest forms are available at the race office. Protests and requests for redress or reopening shall be delivered there within the appropriate time limit.
- 22.2 For each fleet, the protest time limit is 90 minutes after the last boat has finished the last race of the day.
- 22.3 Notices will be posted within 30 minutes of the protest time limit to inform competitors of hearings in which they are parties or named as witnesses. Hearings will be held in the protest room, located at the Race Office beginning at the time posted. Hearings may be scheduled to begin up to 30 minutes before the end of protest time.
- 22.4 Notices of protests by the race committee or protest committee will be posted to inform boats under RRS 61.1(b).
- 22.5 A list of boats that have been penalized under Appendix P for breaking RRS 42 will be posted.
- 22.6 Penalties for breaches of RRS 55 (Trash Disposal), NoR 16 (Berthing), NoR 17 (Haul-Out Restrictions), NoR 18 (Diving Equipment and Plastic Pools), NoR 23 (Media Rights), class rules and rules in the Notice of Race and Sailing Instructions marked [DP], are at the discretion of the jury. A boat may accept a discretionary penalty before a hearing concerning the same incident by completing a form available at the jury office.
- 22.7 Breaches of NoR 16 (Berthing) and rules in the SIs marked [NP] will not be grounds for a protest by a boat. This changes RRS 60.1(a).
- 22.8 For breaches of SIs marked [SP], the race committee may apply a standard penalty without a hearing. A list of these breaches and the associated standard penalties will be posted on the Official Notice Board. However, the race committee may protest a boat when they consider the standard penalty to be inappropriate. A boat that has been penalized with a standard penalty can neither be protested for the same incident by another boat nor can another boat request redress for this race committee action. This changes RRS 63.1 and Appendix A5.
- 22.9 On the last day of the qualifying series or opening series, or on the last scheduled day of racing, a request for reopening a hearing shall be delivered
- (a) within the protest time limit if the requesting *party* was informed of the decision on the previous day;
 - (b) no later than 30 minutes after the *party* was informed of the decision on that day. This changes RRS 66.
- 22.10 On the last day of the qualifying series or opening series, or on the last scheduled day of racing, a request for redress based on a jury decision shall be delivered no later than 30 minutes after the decision was posted. This changes RRS 62.2.

23. [DP] RADIO COMMUNICATION

A boat shall neither make radio transmissions while racing nor receive radio communications not available to all boats, except in an emergency or when using equipment provided by the race committee. This restriction also applies to mobile telephones.



25. [DP] TRASH DISPOSAL

As sailors, we seek to protect and restore our lakes, oceans and coastal waters. See RRS 55. Trash may be placed aboard support and race committee boats.

26. PRIZES

Medals will be awarded to the top 3 boats in each event.

27 [SP][NP] POSITIONING EQUIPMENT

27.1 Before Competition/before Racing

A tracking socket will be supplied by Swiss Timing during registration to all competitors. Competitors shall securely mount the socket to their boat as per the supplied instructions. Athletes shall collect a tracking module from their assigned tracking desk, which must be securely fitted to the tracking socket before racing each day. The location of the assigned tracking desk for each event is:

- For the Skiff and Board at their launching area
- For the One and Two Persons Dinghy at their launching area
- For the 2.4mR class in front of the Race Office

27.2 When returned to Shore, competitors shall return the tracking module within the protest time limit to the same place that they received it.

27.3 Penalties for breaches to those instructions in SI27.1 and 27.2 will be [SP] for each infringement.

(a) Failure to collect the tracking module will result in [SP] for the next race completed even if no race is completed on the day of the infringement.

(b) Failure to return the tracking module will result in [SP] for the last race completed even if no race is completed on the day of the infringement.

27.4 Only one [SP] will be applied to any one race for breaches of instructions 27.1 and 27.2.

27.5 Penalties referred to in Instruction 27.3 are applied by the Race Committee:

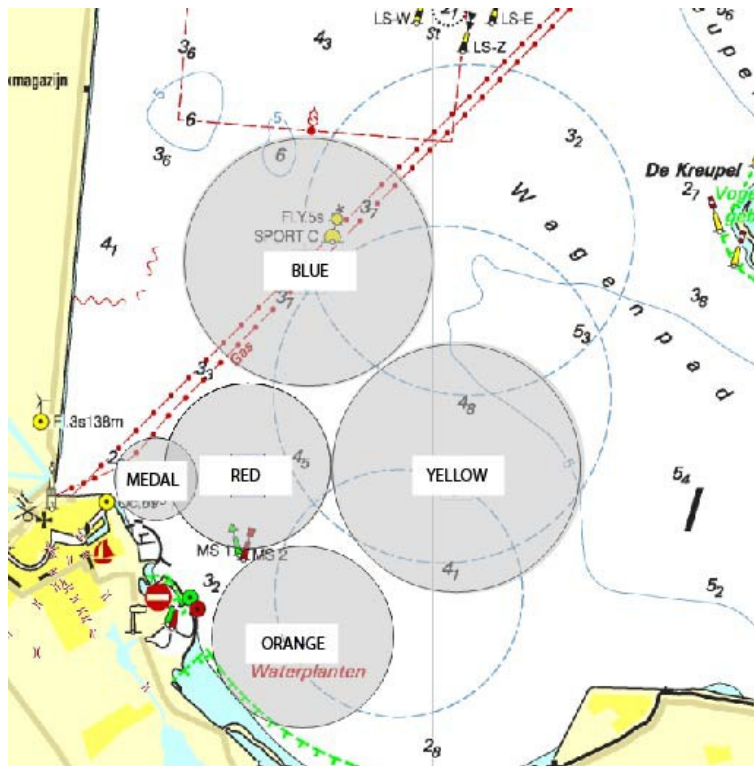
(a) they will be applied without a hearing (this changes RRS 63.1).

(b) a competitor shall not be scored worse than a disqualified competitor.

(c) they will be posted on the Official Notice Board within one hour after the protest time limit.

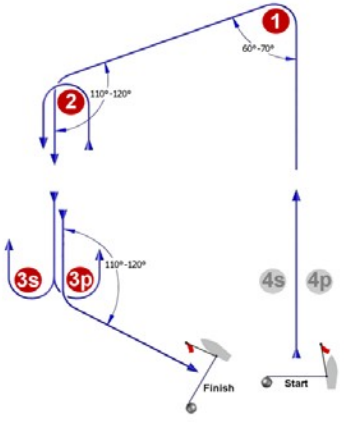
ADDENDUM A - COURSE AREAS

Course	Approx. Position		Approx. bearing from ISCM	Approx. Nm
Yellow	52° 45' 37" N	5° 08' 42" E	125°	1,2
Orange	52° 46' 38" N	5° 10' 14" E	80°	1,9
Red	52° 46' 39" N	5° 08' 09" E	63°	0,7
Blue	52° 47' 53" N	5° 08' 45" E	33°	1,8
Medal races	Close to the harbour			



ADDENDUM B - COURSE ILLUSTRATIONS

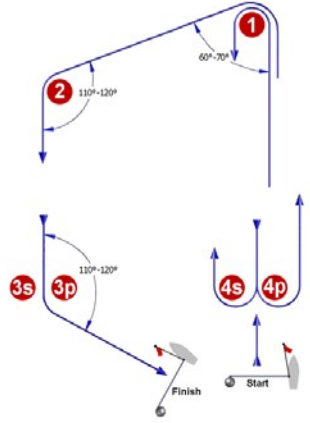
O



Course: Outer Trapezoid

Signal	Mark Rounding Order
O2	Start - 1 - 2 - 3s/3p - 2 - 3p - Finish
O3	Start - 1 - 2 - 3s/3p - 2 - 3s/3p - 2 - 3p - Finish
O4	Start - 1 - 2 - 3s/3p - 2 - 3s/3p - 2 - 3s/3p - 2 - 3p - Finish

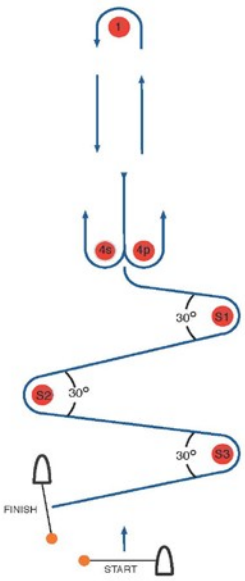
I



Course: Inner Trapezoid

Signal	Mark Rounding Order
I2	Start - 1 - 4s/4p - 1 - 2 - 3p - Finish
I3	Start - 1 - 4s/4p - 1 - 4s/4p - 1 - 2 - 3p - Finish
I4	Start - 1 - 4s/4p - 1 - 4s/4p - 1 - 4s/4p - 1 - 2 - 3p - Finish

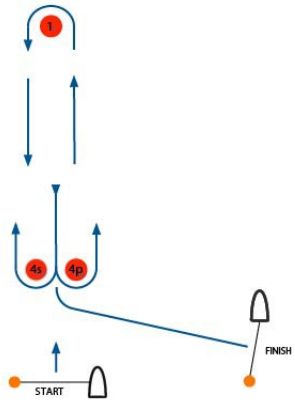
LS



Course: Windward/Leeward with Slalom

Signal	Mark Rounding Order
LS2 *	Start - 1 - 4s/4p - 1 - 4p - S1 - S2 - S3 - Finish
LS3 *	Start - 1 - 4s/4p - 1 - 4s/4p - 1 - 4p - S1 - S2 - S3 - Finish

LR



Signal	Mark rounding/passing order. P – to Port, S – to Starboard
LR1	Start - 1 - 4S/4P Finish
LR2	Start - 1 - 4S/4P - 1 - 4S/4P Finish
LR2	Start - 1 - 4S/4P - 1 - 4S/4P - 1 - 4S/4P - 1 - 4S/4P - Finish

L

Course: Windward/Leeward

Signal	Mark Rounding Order
L2	Start - 1 - 4s/4p - 1 - Finish
L3	Start - 1 - 4s/4p - 1 - 4s/4p - 1 - Finish
L4	Start - 1 - 4s/4p - 1 - 4s/4p - 1 - 4s/4p - 1 - Finish

WA

Course: Same as course W, except with offset Mark 1a

Signal	Mark Rounding Order
W2	Start - 1 - 1a - 4s/4p - Finish
W3	Start - 1 - 1a - 4s/4p - 1 - 1a - 4s/4p - Finish
W4	Start - 1 - 1a - 4s/4p - 1 - 1a - 4s/4p - 1 - 1a - 4s/4p - Finish
W6	Start - 1 - 1a - 4s/4p - 1 - 1a - 4s/4p - 1 - 1a - 4s/4p - 1 - 1a - 4s/4p - Finish

LA

Course: Same as course L, except with offset Mark 1a

Signal	Mark Rounding Order
LA2	Start - 1 - 1a - 4s/4p - 1 - 1a - Finish
LA3	Start - 1 - 1a - 4s/4p - 1 - 1a - 4s/4p - 1 - 1a - Finish
LA4	Start - 1 - 1a - 4s/4p - 1 - 1a - 4s/4p - 1 - 1a - 4s/4p - 1 - 1a - Finish

L

COURSE: THEATRE RACING

Signal	Mark Rounding Order
L2	Start - 1 - 2s/2p - 1 - Finish
L3	Start - 1 - 2s/2p - 1 - 2s/2p - 1 - Finish

RM

Signal	Mark rounding/passing order. P – to Port, S – to Starboard
RM1	Start - 1P - 2S - 1S - 3S - 1P - Finish
RM2	Start - 1P - 2S - 1S - 3S - 1P - 2S - 1S - 3S - 1P - Finish
STARTING SYSTEM 2	



RACING SCHEDULES

Blue Laser				Orange Laser Radial / 2.4mR				49er / 49er FX			Red RS:X / 470			
Sailservice, Joost Brouwer				RZV / WSV Binnenmaas, Joost Kuipers				KWS, Piet van der Zwaag			Hollandia, René Kalff			
				1100	Laser Radial	yellow	O2 R1	1100	49er	L2 R1	1100	RS:X	LR2/LS2	R1
					Laser Radial	blue	I2 R1							
				asap	Laser Radial	yellow	O2 R2	asap	49er	L2 R2	asap	RS:X	LR2/LS2	R2
					Laser Radial	blue	I2 R2							
1200	Laser	yellow	O2 R1											
	Laser	blue	I2 R1											
	Laser	red	I2 R1											
asap	Laser	yellow	O2 R2											
	Laser	blue	I2 R2											
	Laser	red	I2 R2											
								1330	49erFX	L2 R1	13:30	470	L2	R1
				1400	2.4mR		L2 R1	asap	49erFX	L2 R2	asap	470	L2	R2
				asap	2.4mR		L2 R2	asap	49erFX	L2 R3				



RACING SCHEDULES

Blue Laser				Orange Laser Radial / 2.4mR				Yellow 49er / 49er FX				Red RS:X / 470			
Sailservice, Joost Brouwer				RZV / WSV Binnenmaas, Joost Kuipers				KWS, Piet van der Zwaag				Hollandia, René Kalff			
1030	Laser	yellow	O2 R3									1030	470	L2	R3
	Laser	blue	I2 R3									asap	470	L2	R4
	Laser	red	I2 R3					1100	49erFX	L2 R4					
asap	Laser	yellow	O2 R4					asap	49erFX	L2 R5					
	Laser	blue	I2 R4					asap	49erFX	L2 R6					
	Laser	red	I2 R4	1200	Laser Radial	yellow	O2 R3								
					Laser Radial	blue	I2 R3								
				asap	Laser Radial	yellow	O2 R4								
					Laser Radial	blue	I2 R4					1300	RS:X	LR2/LS2	R4
1330	2.4mR		L2 R3					1330	49er	L2 R4	asap	RS:X	LR2/LS2	R5	
asap	2.4mR		L2 R4					asap	49er	L2 R5	asap	RS:X	LR2/LS2	R6	
								asap	49er	L2 R6					



RACING SCHEDULES

Blue Laser				Orange Laser Radial / 2.4mR				Yellow 49er / 49er FX				Green Red				
Sailservice, Joost Brouwer				RZV / WSV Binnenmaas, Joost Kuipers				KWS, Piet van der Zwaag				Hollandia, René Kalff				
				1030	Laser Radial	gold	02 R5					1030	RS:X		LR2/LS2	R7
					Laser Radial	silver	12 R5									
				asap	Laser Radial	gold	02 R6	1100	49er	L2	R7	asap	RS:X		LR2/LS2	R8
					Laser Radial	silver	12 R6	asap	49er	L2	R8	asap	RS:X		LR2/LS2	R9
1200	Laser	gold	02 R5					asap	49er	L2	R9					
	Laser	silver	12 R5													
	Laser	bronse	12 R5													
asap	Laser	gold	02 R6									1330	470		L2	R5
	Laser	silver	12 R6													
	Laser	bronse	12 R6	1330	2.4mR		L2 R5	1330	49erFX	L2	R7	asap	470		L2	R6
				asap	2.4mR		L2 R6	asap	49erFX	L2	R8					
								asap	49erFX	L2	R9					



RACING SCHEDULES

Blue Laser				Orange Laser Radial / 2.4mR				Yellow 49er / 49er FX				Red RS:X / 470			
Sailservice, Joost Brouwer				RZV / WSV Binnenmaas, Joost Kuipers				KWS, Piet van der Zwaag				Hollandia, René Kalff			
1030	Laser	gold	O2 R7									1030	470	L2	R7
	Laser	silver	I2 R7					1100	49erFX	L2	R10	asap	470	L2	R8
	Laser	bronze	I2 R7												
asap	Laser	gold	O2 R8					asap	49erFX	L2	R11				
	Laser	silver	I2 R8					asap	49erFX	L2	R12				
	Laser	bronze	I2 R8	1200	Laser Radial	gold	O2 R7								
					Laser Radial	silver	I2 R7								
				asap	Laser Radial	gold	O2 R8								
					Laser Radial	silver	I2 R8					1300	RS:X	LR2/LS2	R10
1330	2.4mR		L2 R7					1330	49er	L2	R10	asap	RS:X	LR2/LS2	R11
asap	2.4mR		L2 R8					asap	49er	L2	R11	asap	RS:X	LR2/LS2	R12
								asap	49er	L2	R12				
				MEDAL RACE											
				1800	470		L2/L3	MEDAL							
				1900	Laser		L2/L3	MEDAL							



RACING SCHEDULES

Green MEDAL RACES				Blue Laser				Orange Laser Radial / 2.4mR RZV/WSV Binnenmaas,				Red Laser					
Hollandia, René Kalff				Sailservice, Joost Brouwer				Joost Kuipers				KWS, Piet van der Zwaag					
1000	49er	L2	MEDAL 1					1030	Laser Radial	gold	O2	R9	1030	470	L2	R9	
	49er	L2	MEDAL 2						Laser Radial	silver	I2	R9					
	49er	L2	MEDAL 3														
1130	49erFX	L2	MEDAL 1	1100	Laser	gold	O2	R9					1130	49er	L2	R13	
asap	49erFX	L2	MEDAL 2		Laser	silver	I2	R9									
asap	49erFX	L2	MEDAL 3		Laser	bronze	I2	R9	1200	2.4mR		L2	R9				
				1230	RS:X men		LR2/LS2	R13	asap	2.4mR		L2	R10	1230	49erFX	L2	R13
1300	Laser Radial	L2/L3	MEDAL														
1400	RS:X	RM/LR2	Quarter														
asap	RS:X	RM/LR2	Semi														
asap	RS:X	RM/LR2	Repechage														
asap	RS:X	LR1/LR2	Final														



ADDENDUM D - FORMAT

See SI 6 for the description of formats; see SI 21 for the description of scoring systems.

Event	Split fleets if greater then	Number of boats in Gold fleet	Races per Day	Total number of races
Men's One Person Dinghy	60	50%	2	9
Women's One Person Dinghy	60	50%	2	9
Men's and Women Two Person Dinghy	60	50%	2	9
Men's Skiff	40	50%	3	15
Open Skiff	40	50%	3	15
Men's Board	60	50%	3	15
Para World Sailing Single Person	-	N/A	2	10



ADDENDUM E – Format for RS:X Class

1 Format

1.1 The format for the RS:X will consist of an Opening series followed by a Medal Race Stage.

The number of fleets is shown in SI Addendum D and may be changed until 2100 on the day before the first scheduled race.

1.2 Format Opening Series

1.2.1 12 Opening series races are scheduled over 4 days followed as shown in Addendum D

1.2.2 If the event is split into fleets, the Opening series will consist of a Qualifying series followed by a Final Series.

1.3 *Qualifying Series*

1.3.1 Boats will be assigned to Yellow, Blue or Red as nearly as possible, equal size and ability. Initial assignments will be made by a seeding committee appointed by the race committee. Those assignments will be posted by 2100 on the day before the first scheduled race for each event.

1.3.2 Boats will be reassigned to fleets after each day of racing, except if on the first day fewer than two races are completed by all fleets. If all fleets have completed the same number of races, boats will be reassigned on the basis of their ranks in the series. If all fleets have not completed the same number of races, the series scores for reassignment will be calculated for those races, numbered in order of completion, completed by all fleets. Reassignments will be made as follows;

<i>Rank in series</i>	<i>Fleet assignment</i>
First	Yellow
Second	Blue
Third	Red
Fourth	Red
Fifth	Blue
Sixth	Yellow
Seventh	Yellow
Eighth	Blue
and so on	

1.4 *Final Series*

6.4.1 A final series will be scheduled when 4 or more Qualifying series races are completed.

6.4.2 Boats will be assigned to Gold, Silver or Bronze fleets based on their ranks in the qualifying series. The Gold series fleets will have the number of boats shown in Addendum D. Boats with the best qualifying-series ranks will race all final-series races in the Gold fleet. Boats with the next-best qualifying-series ranks will race in the Silver fleet, etc.

6.4.3 Any recalculation of Final Series ranking after boats have been assigned to the Final Series will not affect the assignments except that a redress decision may promote a boat to a higher fleet.



1.5 Medal Race Stage

- 1.5.1 A Medal Race Stage will be scheduled when 6 or more Opening Series races completed. Four races are scheduled in the Medal Race Stage.
- 1.5.1 A one race Quarter Final for the 12 highest ranked boards from the Opening Series.
- 1.5.2 A one race Semi Final for the 6 highest ranked boards from the Quarter Final.
- 1.5.3 A one race Repechage for boards ranked 7, 8 and 9 in the Quarter Finals and boards ranked 4,5 and 6 in the Semi Final.
- 1.5.4 A one race Grand Final for the 3 highest ranked boards from the Semi Final and the winner of the Repechage.
- 1.5.5 Assignments to the Medal Race Stage will be based on the ranking available at 0800 on the day of the Medal Race Stage. The protest committee may extend the time limit.

2 Scoring

2.1 Scoring Opening Series

- 2.1.1 The Low Point System of RRS Appendix A and Appendix B8 shall apply to Opening series except that one score will be excluded after 4 races have been completed.

2.2 Scoring- Medal Race Stage

- 2.2.1 There will be no point scoring in the Medal Race Stage. A board's score in a race will be based on her finishing order in that race.
- 2.2.2 The Medal Race Stage races shall not be excluded neither will the Medal Race Stage races trigger any discards from results in Opening Series.
- 2.2.3 The boards assigned to compete in the Medal Race Stage will be ranked highest in the regatta except a board penalized under RRS 5, 6, 7 or 69 may be ranked differently.
- 2.2.4 The first 6 finishers in the Quarter Final race shall advance to the Semi Final. Boards finished in places 7, 8 and 9 shall advance to the Repechage Race. Boards finished in places 10,11 and 12 shall be scored in those positions in the Event. If no Quarter Final is completed, boards will be ranked according the overall scores in Opening Series.
- 2.2.5 The first 3 finishers in the Semi Final race shall advance to the Grand Final. Boards finished in places 4,5 and 6 shall advance to the Repechage Race. If no Semi Final is completed, boards will be ranked according to their finishing positions in Quarter Final.
- 2.2.6 The first finisher in the Repechage Race will advance to the Grand Final. Boards finished in places 2 to 6 shall be scored 5th to 9nd place in the Event. If no Repechage Race is completed, boards will be ranked according to their finishing positions in Semi Final or Quarter Final.
- 2.2.6 The winner of the Grand Final race is the winner of the Event. The second finisher shall be scored 2nd place, the third finisher shall be scored 3rd place and the fourth finisher shall be scored 4th place in the Event. If no Grand Final is completed, boards will be ranked according to their finishing positions in Semi Final and the winner of the Repechage will be scored fourth place.



Addendum F [DP] ADDITIONAL PRESCRIPTIONS AND IMPORTANT INFORMATION.

1. Additional Identification and Advertising.

- 1.1 While racing, boats shall display bow numbers (Laser and Laser Radial only) and advertising for the Event sponsor(s). The organizing authority will supply the first set of numbers and advertising. Spare numbers and advertising are available at cost, Euro 2 per digit, and Euro 2 per advertising sticker, at the regatta office. The allocated bow numbers (for Olympic classes no 1-20 corresponding with the first 20 of the World Sailing Rankings published Monday 1 May 2017) and advertising sticker supplied shall not be reduced in size and shall be affixed with the forward edge no further than 5 cm from the edge of the deck and the bow of the boat on both sides of the hull(s).

Boards shall display the Event sponsor(s) advertising sticker just above the wishbone and the forward edge no further away than 10cm from the luff sleeve, on both sides of the sail.

- 1.2 Each boat is solely responsible for carrying the bow numbers and advertising during racing.
- 1.3 The coloured dots as per SI 20.1 shall be clearly displayed in the top half of the main sail.
- 1.4 The coloured ribbon for the fleet identification as per SI 20.4 will be attached to the top of the mast except for the Skiff where it will be attached to the end of the boom and Boards where it will be attached to the second top batten.
- 1.5 The bow numbers shall be in front of the event sponsor sticker, so that they are attached between the event sponsor sticker and the edge of the bow. If supplied, both or all three numbers must be displayed.

delta lloyd 03



ADDENDUM G - Coach Boat Regulations

1. General

- 1.1. These Coach Boat Regulations (CBR) shall apply from 0900 on Saturday May 20 until 1800 Saturday May 27.
- 1.2. For the purposes of these regulations, a coach boat includes any boat that is under the control or direction of a person who is or may provide physical or advisory support to an athlete, including the gathering of data that may be used at a later time.
- 1.3. The Organizing Authority may inspect boats at any time to ensure that they comply with these regulations, and the person responsible for the boat shall facilitate such inspection.
- 1.4. An alleged breach of any of these regulations may be referred to the International Jury for a hearing. As a result of the hearing, the International Jury may instruct the Organizing Authority to withdraw accreditation and access rights from the offending party, with or without the option of substitution, either for a specified period or for the remainder of the competition. Note also, action may be taken under RRS 69.
- 1.5. The Organizing Authority may change these regulations at any time. Any changes will be posted on the Official Noticeboard and circulated to team leaders.
- 1.6. The Organizing Authority may, at its discretion, refuse to register coach boats not deemed to be suitable. Generally, open boats more than 4.0m and less than 7.5m in length and having minimal or no superstructure (cabin, coach house, bridge, etc) are considered suitable.
- 1.7. Coach boats and designated drivers shall be registered at the Regatta Office either before leaving the venue by water for the first time or by 18 00 on the day before the first race of the Event that it is supporting, whichever is earlier.
 - 1.7.1. Each boat shall be insured with valid third-party liability insurance with a minimum coverage of € 3,000,000Euro (or equivalent) per incident.
 - 1.7.2. Only an accredited coach may be a designated driver.
 - 1.7.3. The person registering the coach boat shall sign to confirm that:
 - he / she holds a valid insurance certificate showing proof of third-party liability coverage as required by 1.7.1;
 - the designated driver has a motorboat driving licence recognised by a national authority appropriate to that boat; and
 - anyone who will be using a radio has an appropriate radio operation licence recognised by a national authority.
- 1.8. Coach boats shall be marked as follows:
 - 1.8.1. The three-letter NOC code shall be clearly displayed on both sides of the boat in strongly contrasting colours at all times while afloat. The minimum height for the letters shall be 200mm. The letters will not be provided by the Organising Authority.
 - 1.8.2. A rib identification sticker provided by the Organising Authority

2. Sailing Venue

- 2.1. Coach boats shall use the designated slipway/area for launching. Once launched, trailers shall be moved immediately to the trailer park or as otherwise directed by the Organizing Authority.
- 2.2. Only registered coach boats will be allowed into the sailing venue.
- 2.3. When not in use, coach boats shall be appropriately berthed at the sailing venue in the allocated areas for coach boats for the entire time that these CBR apply.
- 2.4. Coach boats shall not use the dinghy launching slipways or keelboat pontoons for any purpose whatsoever, including mooring, launching and retrieval, and loading and unloading of equipment.



3. Safety

- 3.1. Coach boats shall carry on board:
 - life jackets / buoyancy aid for all passengers (it is strongly recommended that they are worn at all times when afloat);
 - first-aid kit;
 - VHF radio;
 - device for making a sound signal;
 - compass;
 - adequate anchor and tackle for conditions and depth;
 - tow rope (minimum 15m long and 10mm thick);
 - operational engine kill cord (also known as a safety lanyard or automatic engine immobilizer);
 - knife
- 3.2. By Dutch law it is mandatory to the kill cord at all times when the engine is running.
- 3.3. By Dutch law it is mandatory for the driver to wear a life at all times when the engine is running.
- 3.4. Coach boats shall never exceed maximum plated / certified passenger limits.
- 3.5. Team leaders are responsible for overseeing the safety of their coach boats on the water, including knowledge of who is afloat and ensuring their safe return to the venue.
- 3.6. At all times, the registered driver(s) of a coach boat shall comply with directions given by a Race Official. In particular, this includes assisting in rescue operations when requested to do so.
- 3.7. Coach boats shall comply with local harbour and marina regulations, in particular speed limits

4. General restrictions

- 4.1. The registered driver(s) of a coach boat will be responsible for the control of the boat at all times and will be held responsible for any inappropriate behavior, dangerous actions or improper practices, or actions affecting the fairness or safety of competition.
- 4.2. Coach boats shall not leave any device, piece of equipment, buoy, marker or similar item permanently in the water. Temporary use of floating objects is allowed for current measurement. These objects shall be removed as soon as the measurement has been taken.
- 4.3. Coach boats should take particular care to minimize their wash when transiting the course areas.

5. Coach Boat Zone

- 5.1. Coach Boats shall not be positioned:
 - i. Closer than 50 meters of any boat racing
 - ii. Within 50 meters of the starting line and marks from the time of the preparatory signal until all boats have left the starting area, or the race committee signals a postponement, general recall or abandonment.
 - iii. Between any boat racing and the next mark of the course.
 - iv. Between the inner and outer trapezoid courses when boats are racing on both courses.
 - v. Within 50 meters of any mark of the course while boats are in the vicinity of that mark.
 - vi. Within 50 meters of the finishing line and marks while boats are finishing.
- 5.2. In addition, support boats that are motoring above 5 knots shall remain at least 150 meters from any boat racing.
- 5.3. Additional restrictions apply to Medal Race Stages and will be posted on the official notice board



ADDENDUM Q

UMPIRED FLEET RACING

Under rule 86.2 and Regulation 28.1.3, World Sailing has approved the use of these sailing instructions as an addendum to the sailing instructions in World Sailing 200-Point and 100-Point Events from January 22, 2017 and until changed, for umpired fleet racing in the last race(s) of each series for the Olympic classes. Similar events are also encouraged to use the addendum. This can be done under rule 86.3 if the national authority prescribes that rule changes are allowed for the purpose of development and testing. Please note that the national authority may prescribe that such changes require its approval.

Races may be sailed under the sailing instructions in this addendum only if the notice of race and the sailing instructions so state, with reference to the relevant version, and that version is posted on the official notice board.

Use of this addendum is recommended for races in which about ten one-design boats compete with umpires present. There should be one umpire boat for every three or four boats in the fleet.

When Addendum Q is posted on the official noticeboard, this paragraph and the three paragraphs above should be deleted. Nothing below should be changed or deleted.

This addendum has been approved by World Sailing in accordance with rule 86.2 and Regulation 28.1.3. It applies to all medal races and all pre-race or post-race activities related to them.

Version: April 27, 2017

Marginal marks indicate important changes from the previous version.

These sailing instructions change the definition Proper Course, and rules 20, 28.2, 44, 60, 61, 62, 63, 64.1, 65, 66, 70, 78.3 and B5.

Q1 CHANGES TO RACING RULES

Additional changes to rules are made in instructions Q2, Q3, Q4, and Q5.

Q1.1 Changes to the Definitions and the Rules of Part 2 and Part 4

- (a) Add to the definition Proper Course: 'A boat taking a penalty or manoeuvring to take a penalty is not sailing a *proper course*.'
- (b) When rule 20 applies, the following arm signals are required in addition to the hails:
 - (1) for 'Room to tack', repeatedly and clearly pointing to windward; and
 - (2) for 'You tack', repeatedly and clearly pointing at the other boat and waving the arm to windward.

Instruction Q1.1(b) does not apply to boards.

Q1.2 Changes to Rules Involving Protests, Requests for Redress, Penalties and Exoneration

- (a) The first sentence of rule 44.1 is replaced with: 'A boat may take a One-Turn Penalty in accordance with rule 44.2 when, in an incident while *racing*, she may have broken one or more of the rules of Part 2 (except rule 14 when she has caused damage or injury), rule 31 or rule 42.'



- (b) For boards, the One-Turn Penalty is one 360° turn with no requirement for a tack or a gybe.
- (c) Rule 60.1 is replaced with 'A boat may protest another boat or request redress provided she complies with instructions Q2.1 and Q2.4.'
- (d) The third sentence of rule 61.1(a) and all of rule 61.1(a)(2) are deleted. Rule B5 is deleted.
- (e) Rules 62.1(a), (b) and (d) are deleted. In a race where this addendum applies, there shall be no scoring adjustments for redress given under any of these rules for a previous race.
- (f) Rule 64.1(a) is changed so that the provision for exonerating a boat may be applied by the umpires without a hearing, and it takes precedence over any conflicting instruction of this addendum.
- (g) Rules P1 to P4 shall not apply.

Q2 PROTESTS AND REQUESTS FOR REDRESS BY BOATS

- Q2.1** While racing, a boat may protest another boat under a rule of Part 2 (except rule 14) or under rule 31 or 42; however, a boat may only protest under a rule of Part 2 for an incident in which she was involved. To do so she shall hail 'Protest' and conspicuously display a red flag at the first reasonable opportunity for each. She shall remove the flag before, or at the first reasonable opportunity after a boat involved in the incident has taken a penalty voluntarily or after an umpire's decision. However, a board need not display a red flag.
- Q2.2** A boat that protests as provided in instruction Q2.1 is not entitled to a hearing. Instead, a boat involved in the incident may acknowledge breaking a rule by taking a One-Turn Penalty in accordance with rule 44.2. An umpire may penalize any boat that broke a rule and was not exonerated, unless the boat took a voluntary penalty.
- Q2.3** At the finishing line, the race committee will inform the competitors about each boat's finishing place or scoring abbreviation. After this has been done, the race committee will promptly display flag B with one sound. Flag B will be displayed for at least two minutes and then removed with one sound. If the race committee changes the scoring information provided at the finishing line while flag B is displayed, it will display flag L with one sound. Flag B will continue to be displayed for at least two minutes after any changes are made.
- Q2.4** A boat intending to
- (a) protest another boat under a rule other than instruction Q3.2 or rule 28, or a rule listed in instruction Q2.1,
 - (b) protest another boat under rule 14 if there was contact that caused damage or injury, or
 - (c) request redress
- shall hail the race committee before or during the display of flag B. The same time limit applies to protests under instruction Q5.5. The protest committee may extend the time limit if there is good reason to do so.
- Q2.5** The race committee will promptly inform the protest committee about any protests or requests for redress made under instruction Q2.4.



Q3 UMPIRE SIGNALS AND IMPOSED PENALTIES

Q3.1 An umpire will signal a decision as follows:

- (a) A green and white flag with one long sound means 'No penalty.'
- (b) A red flag with one long sound means 'A penalty is imposed or remains outstanding.' The umpire will hail or signal to identify each such boat.
- (c) A black flag with one long sound means 'A boat is disqualified.' The umpire will hail or signal to identify the boat disqualified.

Q3.2 (a) A boat penalized under instruction Q3.1(b) shall take a One-Turn Penalty in accordance with rule 44.2.

- (b) A boat disqualified under instruction Q3.1(c) shall promptly leave the course area.

Q4 PENALTIES AND PROTESTS INITIATED BY AN UMPIRE; ROUNDING OR PASSING MARKS

Q4.1 When a boat

- (a) breaks rule 31 and does not take a penalty,
- (b) breaks rule 42,
- (c) gains an advantage despite taking a penalty,
- (d) deliberately breaks a rule,
- (e) commits a breach of sportsmanship, or
- (f) fails to comply with instruction Q3.2 or to take a penalty when required to do so by an umpire,

an umpire may penalize her without a protest by another boat. The umpire may impose one or more One-Turn Penalties to be taken in accordance with rule 44.2, each signalled in accordance with instruction Q3.1(b), or disqualify her under instruction Q3.1(c), or report the incident to the protest committee for further action. If a boat is penalized under instruction Q4.1(f) for not taking a penalty or taking a penalty incorrectly, the original penalty is cancelled.

Q4.2 The last sentence of rule 28.2 is changed to 'She may correct any errors to comply with this rule, provided she has not rounded the next *mark* or *finished*.' A boat that does not correct any such error shall be disqualified under instruction Q3.1(c).

Q4.3 An umpire who decides, based on his own observation or a report received from any source, that a boat may have broken a rule, other than instruction Q3.2 or rule 28 or a rule listed in instruction Q2.1, may inform the protest committee for its action under rule 60.3. However, he will not inform the protest committee of an alleged breach of rule 14 unless there is damage or injury.



Q5 PROTESTS; REQUESTS FOR REDRESS OR REOPENING; APPEALS; OTHER PROCEEDINGS

- Q5.1** No proceedings of any kind may be taken in relation to any action or non-action by an umpire.
- Q5.2** A boat may not base an appeal on an alleged improper action, omission or decision of the umpires. A party to a hearing may not base an appeal on the decision of the protest committee. In rule 66 the third sentence is changed to 'A *party* to the hearing may not ask for a reopening.'
- Q5.3**
- (a) Protests and requests for redress need not be in writing.
 - (b) The protest committee may take evidence and conduct the hearing in any way it considers appropriate and may communicate its decision orally.
 - (c) If the protest committee decides that a breach of a rule has had no effect on the outcome of the race, it may impose a penalty of points or fraction of points or make another arrangement it decides is equitable, which may be to impose no penalty.
 - (d) If the protest committee penalizes a boat in accordance with instruction Q5.3 or if a standard penalty is applied, all other boats will be informed about the change of the penalized boat's score.
- Q5.4** The race committee will not protest a boat.
- Q5.5** The protest committee may protest a boat under rule 60.3. However, it will not protest a boat for breaking instruction Q3.2 or rule 28, a rule listed in instruction Q2.1, or rule 14 unless there is damage or injury.